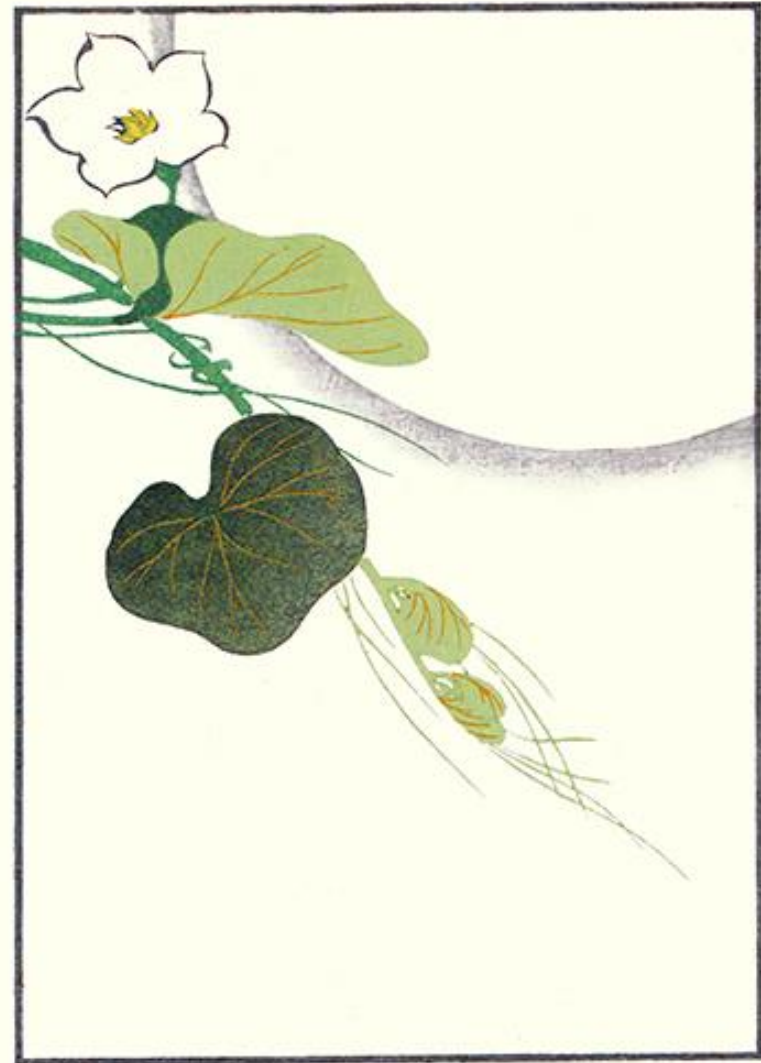
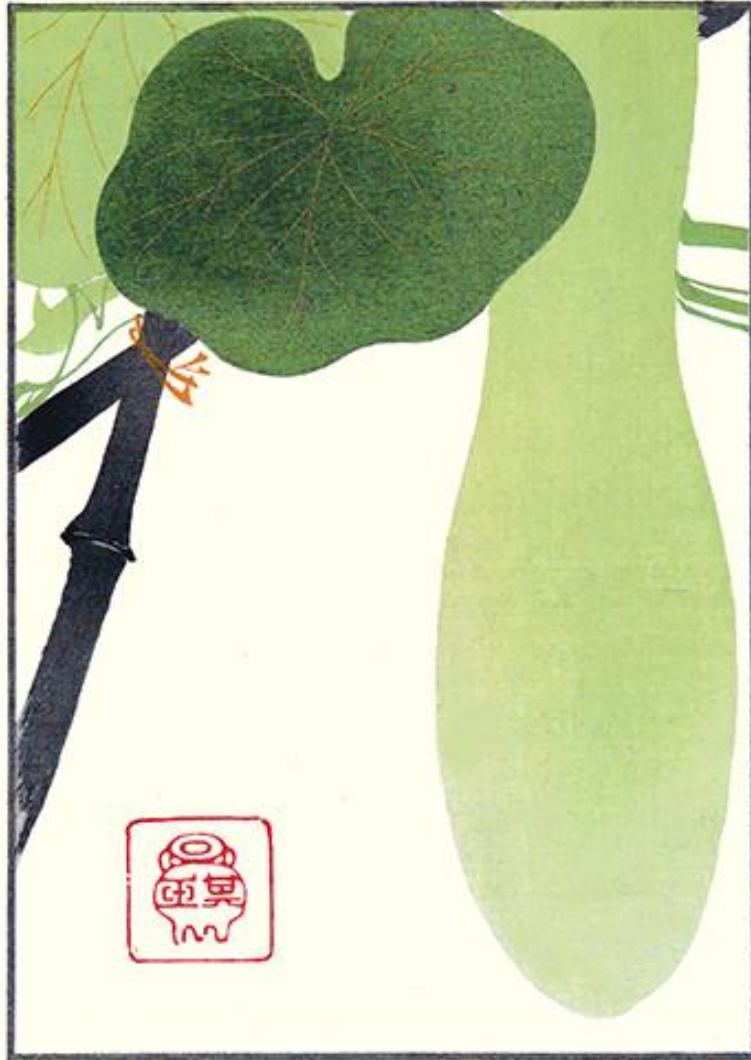


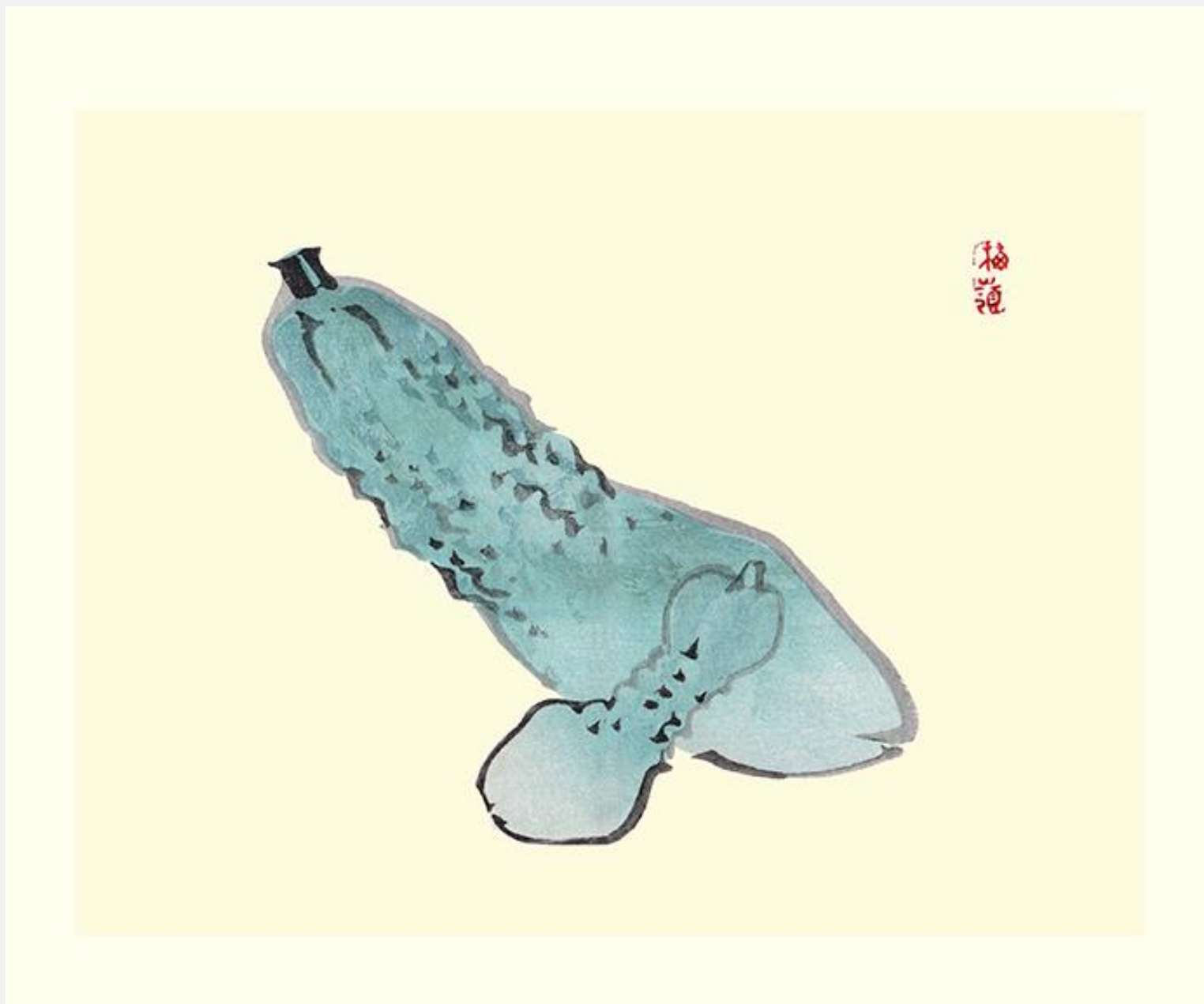
Introduction

Fruit is an important part of the human diet. Consequently, edible fruits are well known to most people, including artists. Their familiarity with edible fruits may explain why these fruits were often chosen as subjects for art. Thirty examples of this edible art (i.e., fruit) are shown in this virtual exhibition. All thirty examples were included in Japanese picture books published between the mid-1700s and early 1900s. The purpose of these picture books was either to provide art students with models to copy or to provide art lovers with examples of the work of a particular artist. For each of the thirty pictures the following information is provided: names of the fruit and artist, title and publication date of the picture book, printing method and picture size. These pictures and picture books are part of the Reader Collection of Japanese Flower-and-Bird Art.

1 **Bottle gourd** (*Lagenaria siceraria*) by Kigyoku Nakano, included in Kigyoku Gafu (i.e., Picture Album by Kigyoku) published in 1901, woodblock print, 190 x 280 mm



2 **Cucumber** (*Cucumis sativus*) by Bairei Kōno, included in Bairei Gakan (i.e., Drawing Methods of Bairei) published in 1913, woodblock print, 270 x 215 mm



3 **Dishrag gourd** (*Luffa cylindrica*) by Gyokushō Kawabata, included in Teikoku Mōhitsu Shin Gajō (i.e., New Album of Brush Paintings) published in 1897, woodblock print, 245 x 175 mm



4 **Melon** (*Cucumis melo*) by Keinen Imao, included in Keinen Shūgajō (i.e., Album of Picture Lessons by Keinen) published in 1906, woodblock print, 330 x 240 mm



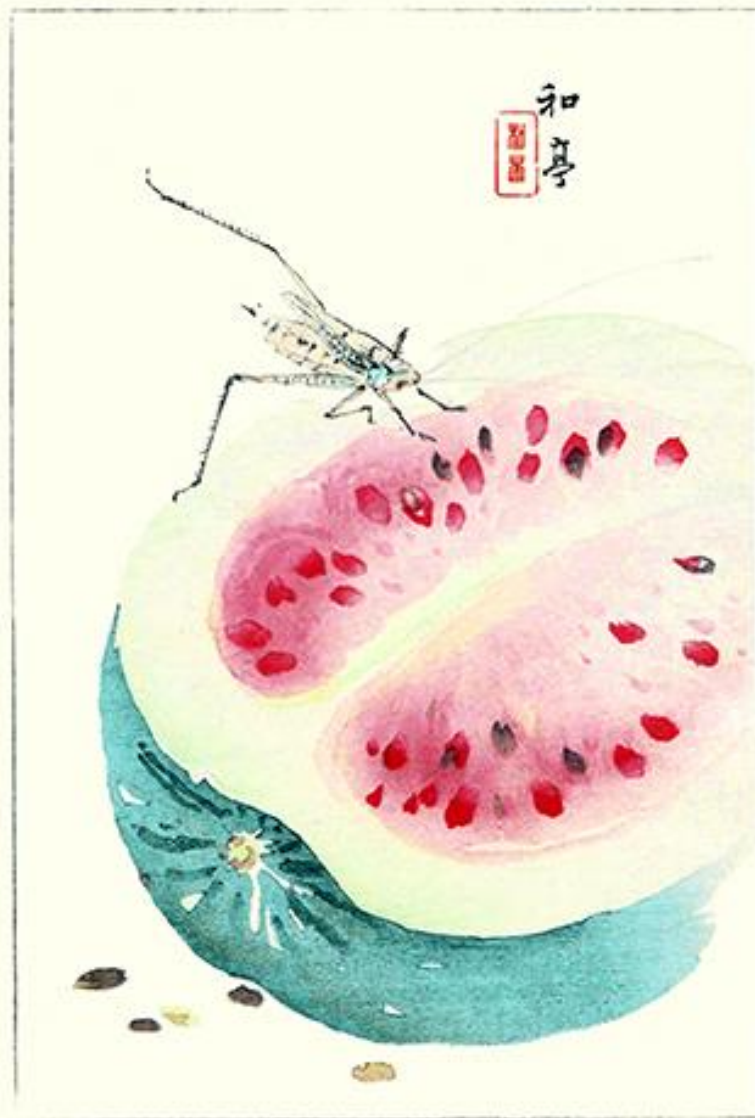
5 **Squash** (*Cucurbita moschata*) by Shumboku Ōoka, included in *Wakan Sōgyoku Tansei Kinnō* (i.e., *Brocade Bag of Japanese and Chinese Painting*) published in 1753, woodblock print, 180 x 270 mm



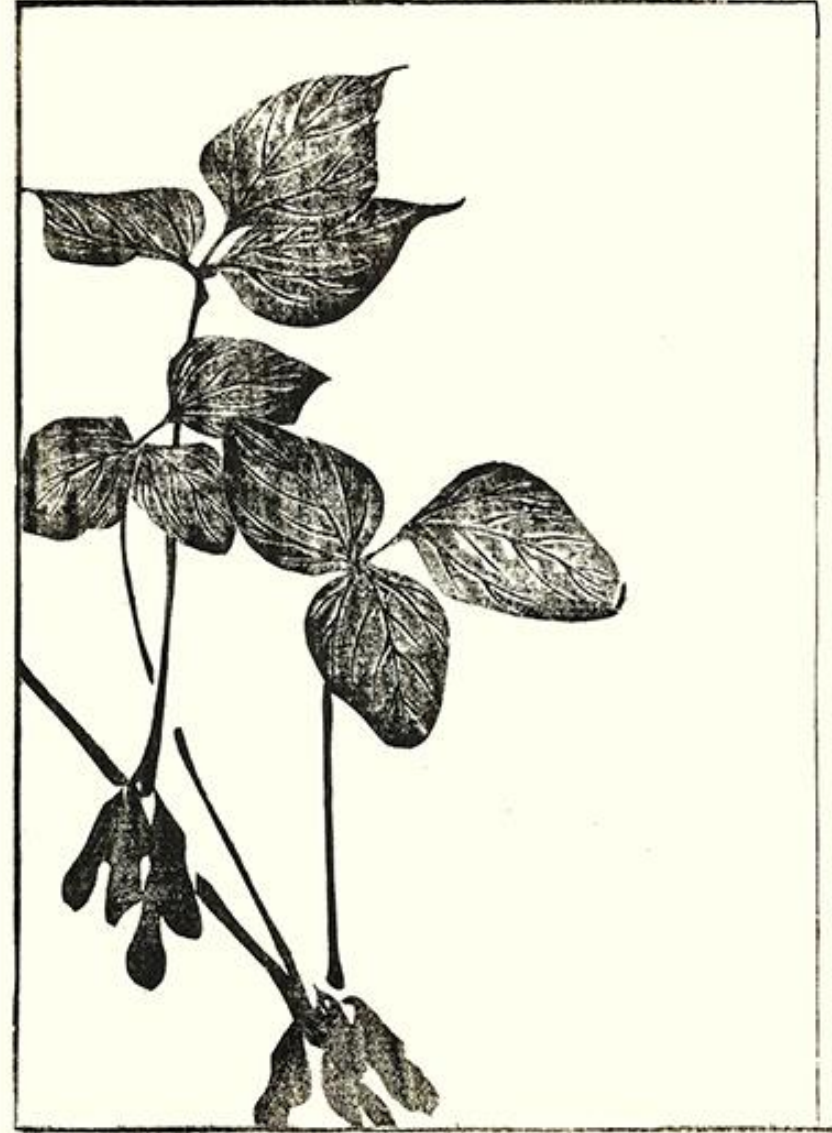
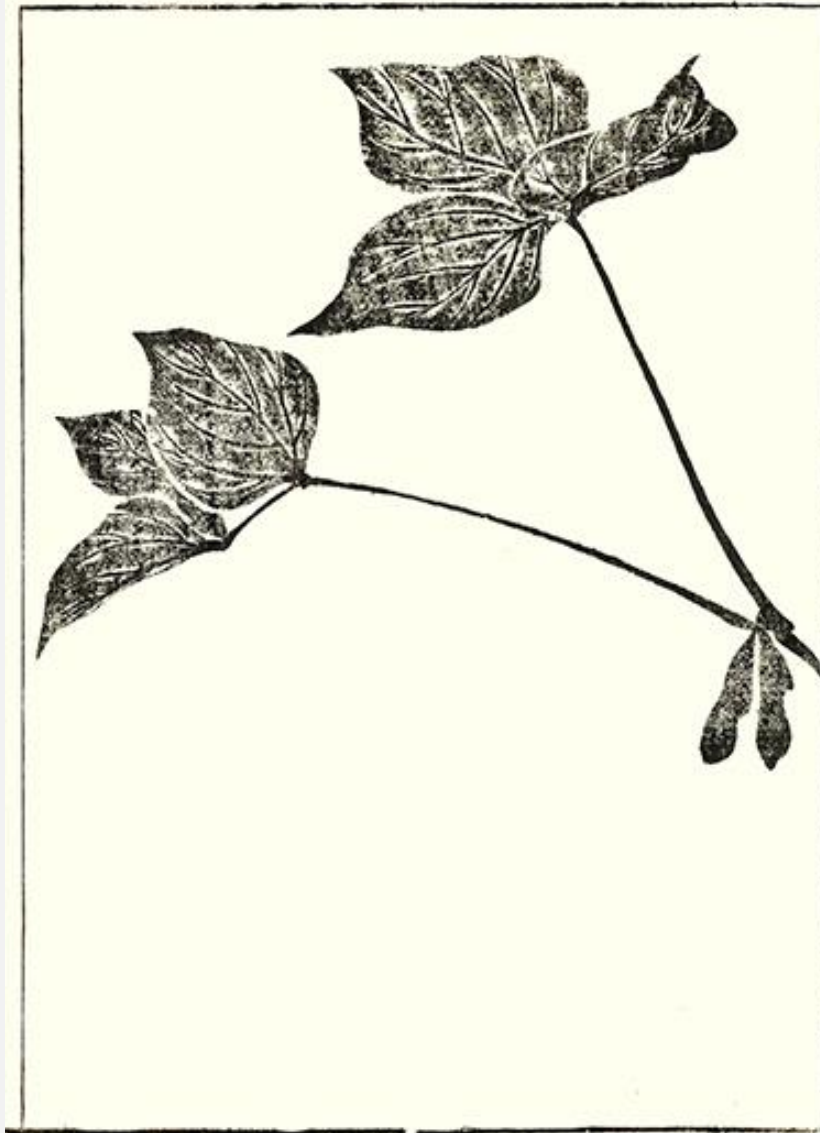
6 **Balsam-apple** (*Momordica charantia*) by Ryōtai Tatebe, included in *Kanyōsai Gafu* (i.e., Picture Album by Kanyōsai) published in 1762, woodblock print, 370 x 270 mm



7 **Watermelon** (*Citrullus lanatus*) by Katei Taki, included in Bijutsu Sekai (i.e., World of Art) published in 1892-5, woodblock print, 150 x 240 mm



8 **Bean** (*Phaseolus vulgaris*) by Soken Yamaguchi, included in Soken Gafu Sōka No Bu (i.e., Picture Album by Soken Flower Part) published in 1806, woodblock print, 360 x 260 mm



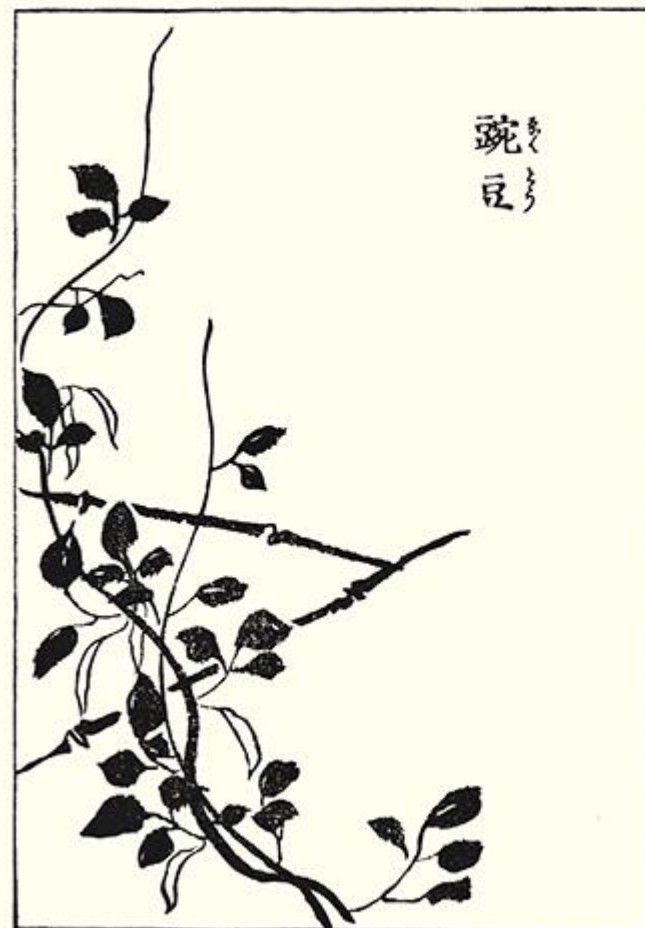
9-10 **Hyacinth bean** (*Dolichos lablab*) and **soybean** (*Glycine max*) by Hokuun Katsushika, included in Hokuun Manga (i.e., Sketches by Hokuun) published in 1824, woodblock print, 155 x 225 mm



11 **Mung-bean** (*Vigna radiata*) by Kagei Tatebayashi, included in *Kōrin Manga* (i.e., *Sketches by Kōrin*) published in 1817, woodblock print, 160 x 230 mm



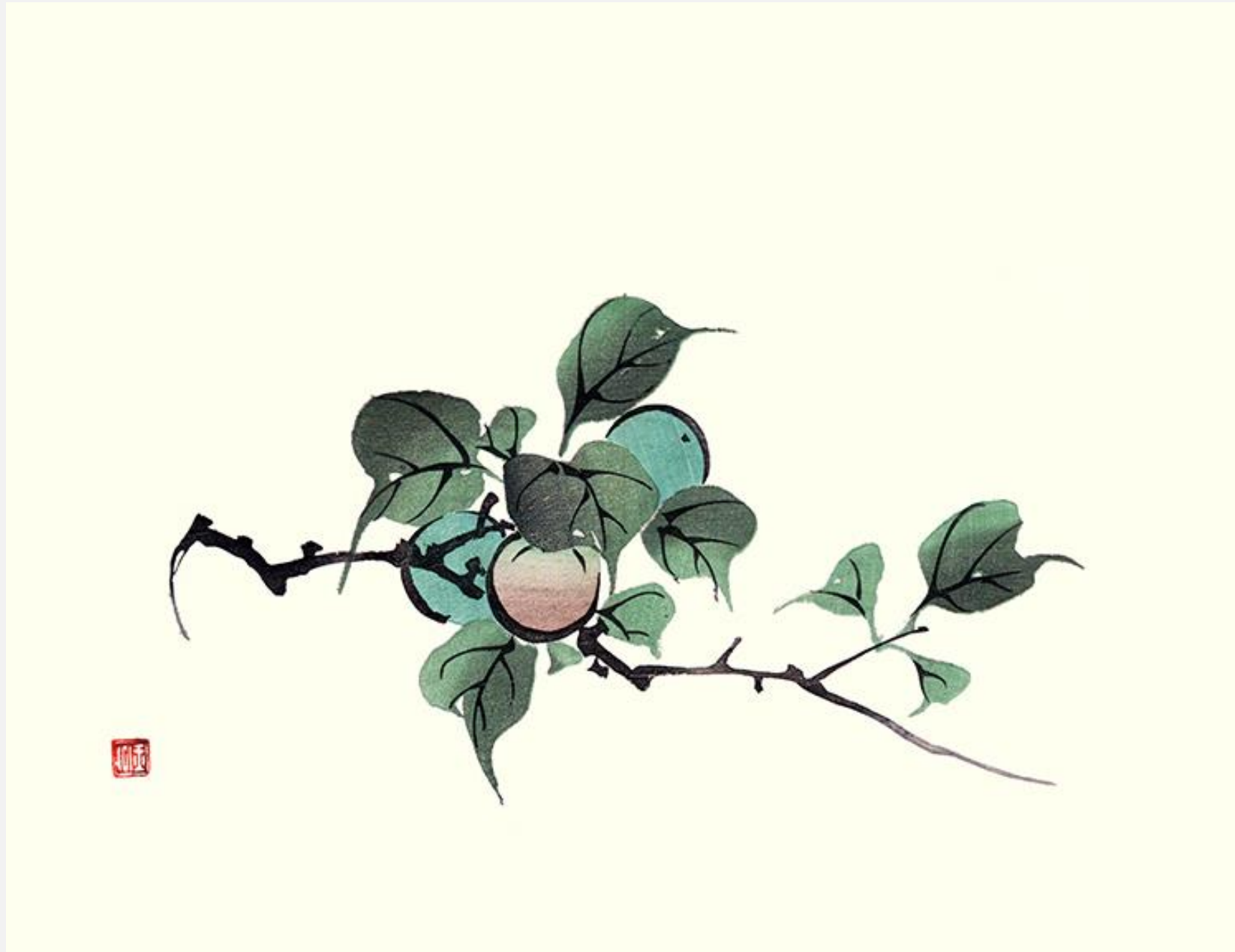
12 **Pea** (*Pisum sativum*) by Kagei Tatebayashi, included in *Kōrin Manga* (i.e., *Sketches by Kōrin*) published in 1817, woodblock print, 160 x 230 mm



13 **Sword bean** (*Canavalia gladiata*) by Yasukuni Tachibana, included in Ehon Ebitsu Sen (i.e., Picture Book of Selected Subjects) published in 1779, woodblock print, 320 x 255 mm



14 **Plum** (*Prunus mume*) by Gyokushū Fujii, included in *Gyokushū Shūgachō* (i.e., *Picture Lessons by Gyokushū*) published in 1906, woodblock print, 310 x 240 mm



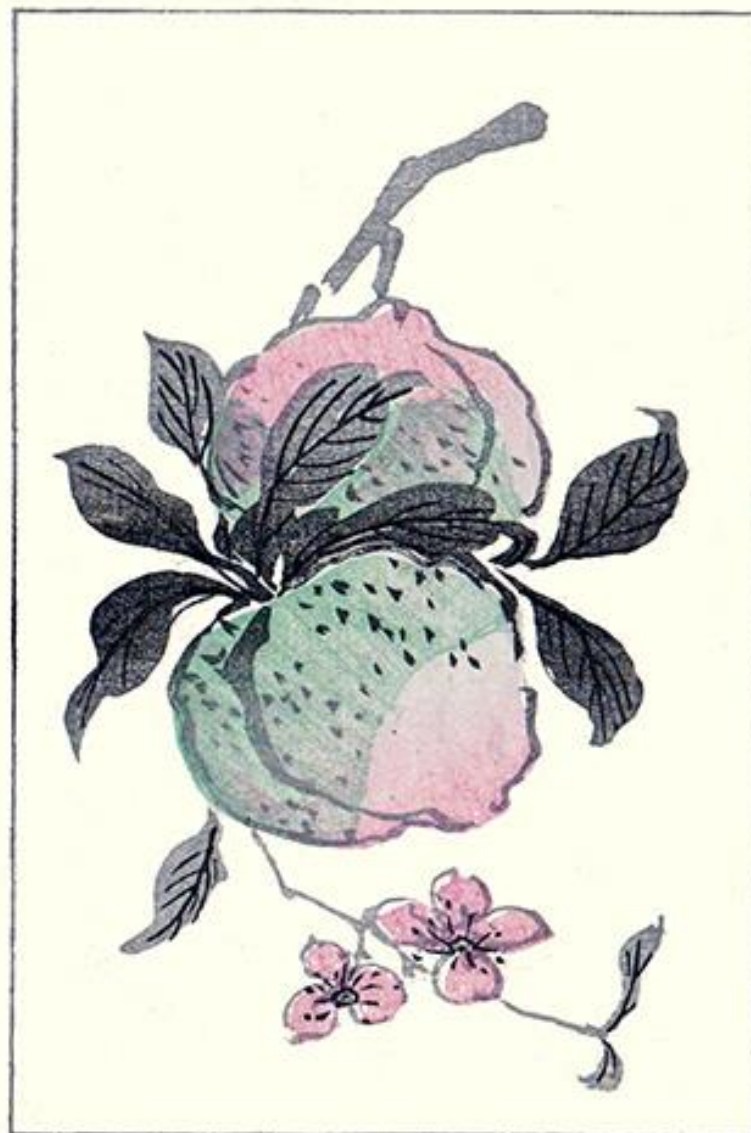
15 **Cherry** (*Prunus* sp.) by Kajō Matsuda, included in *Kajō Shūgajō* (i.e., *Album of Picture Lessons by Kajō*) published in 1914, woodblock print, 370 x 250 mm



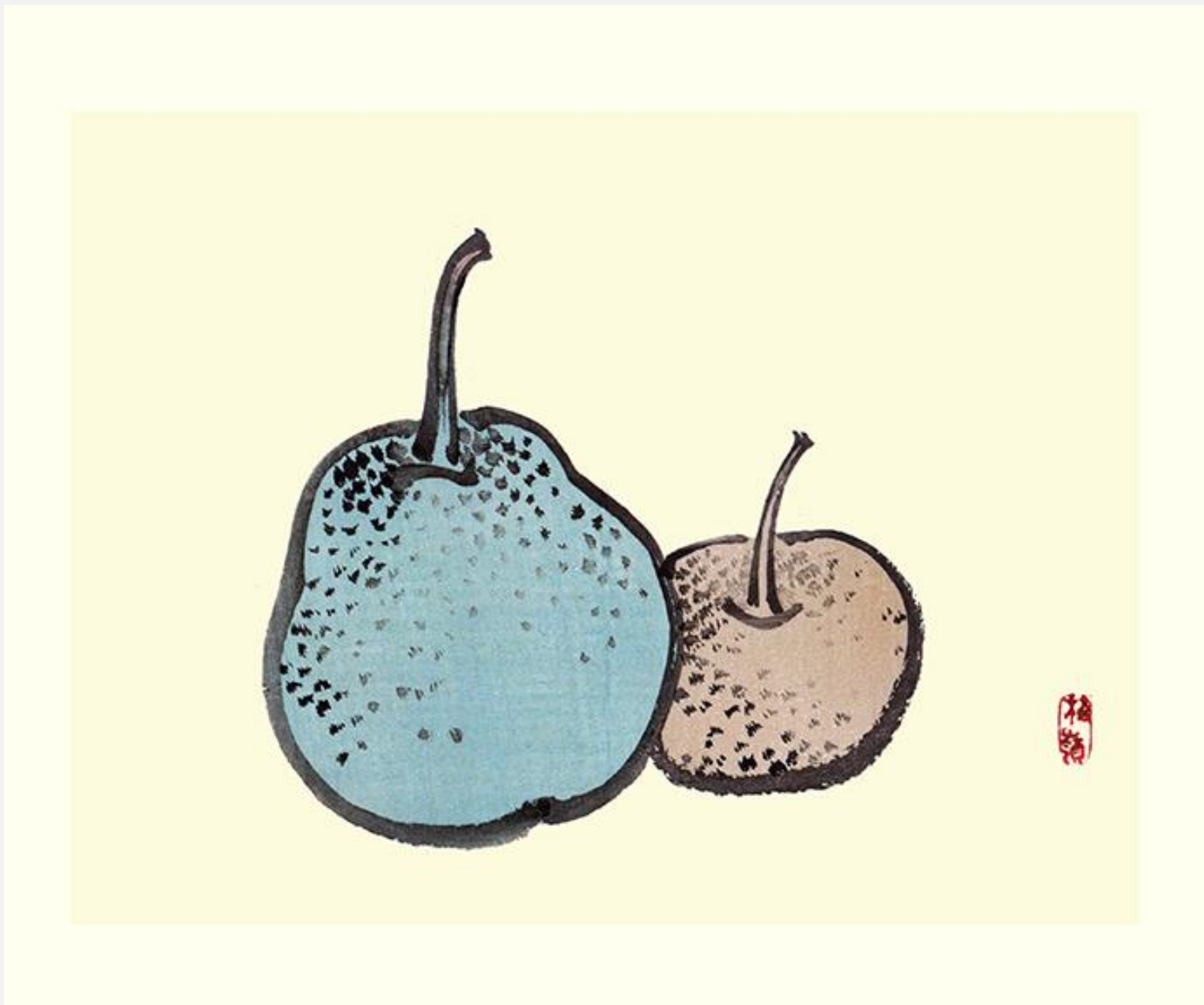
16 **Loquat** (*Eriobotrya japonica*) by Katei Taki, included in Tansei Ippan (i.e., Models for Painting) published in 1894, woodblock print, 320 x 255 mm



17 **Peach** (*Prunus persica*) by Rangai Miyake, included in Rangai Gafu (i.e., Picture Album by Rangai) published in 1881, woodblock print, 125 x 185 mm



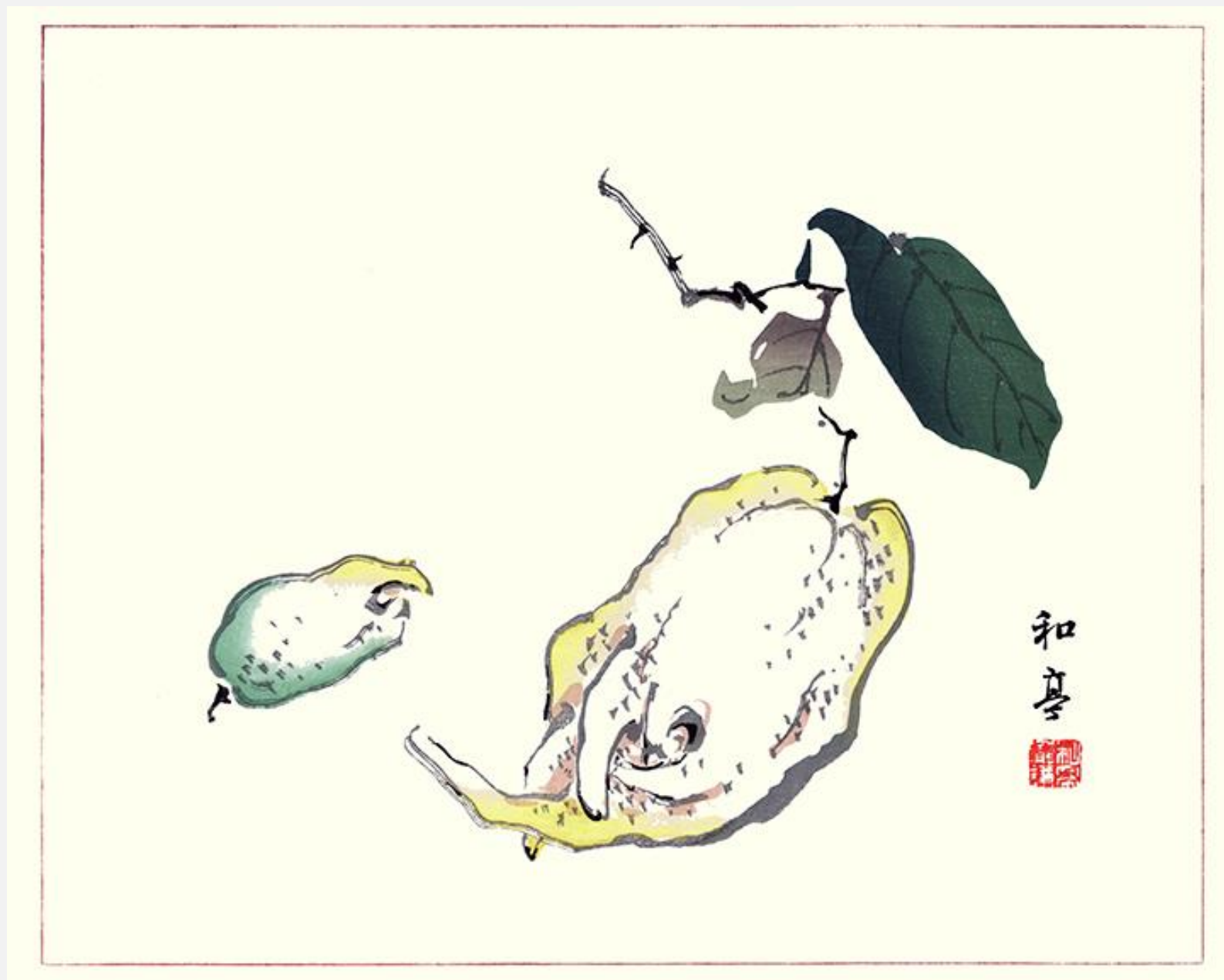
18 **Sand pear** (*Pyrus pyrifolia*) by Bairei Kōno, included in Bairei Gakan (i.e., Drawing Methods of Bairei) published in 1913, woodblock print, 270 x 215 mm



19 **Bitter orange** (*Citrus aurantium*) by Gyokushō Kawabata, included in *Shūga Hyakudai* (i.e., *One Hundred Lessons in Painting*) published in 1898, woodblock print, 330 x 250 mm



20 **Etrog** (*Citrus medica*) by Katei Taki, included in Tansei Ippan (i.e., Models for Painting) published in 1894, woodblock print, 320 x 255 mm



21 **Japanese citron** (*Citrus junos*) by Keinen Imao, included in Keinen Shūgajō (i.e., Album of Picture Lessons by Keinen) published in 1906, woodblock print, 330 x 240 mm



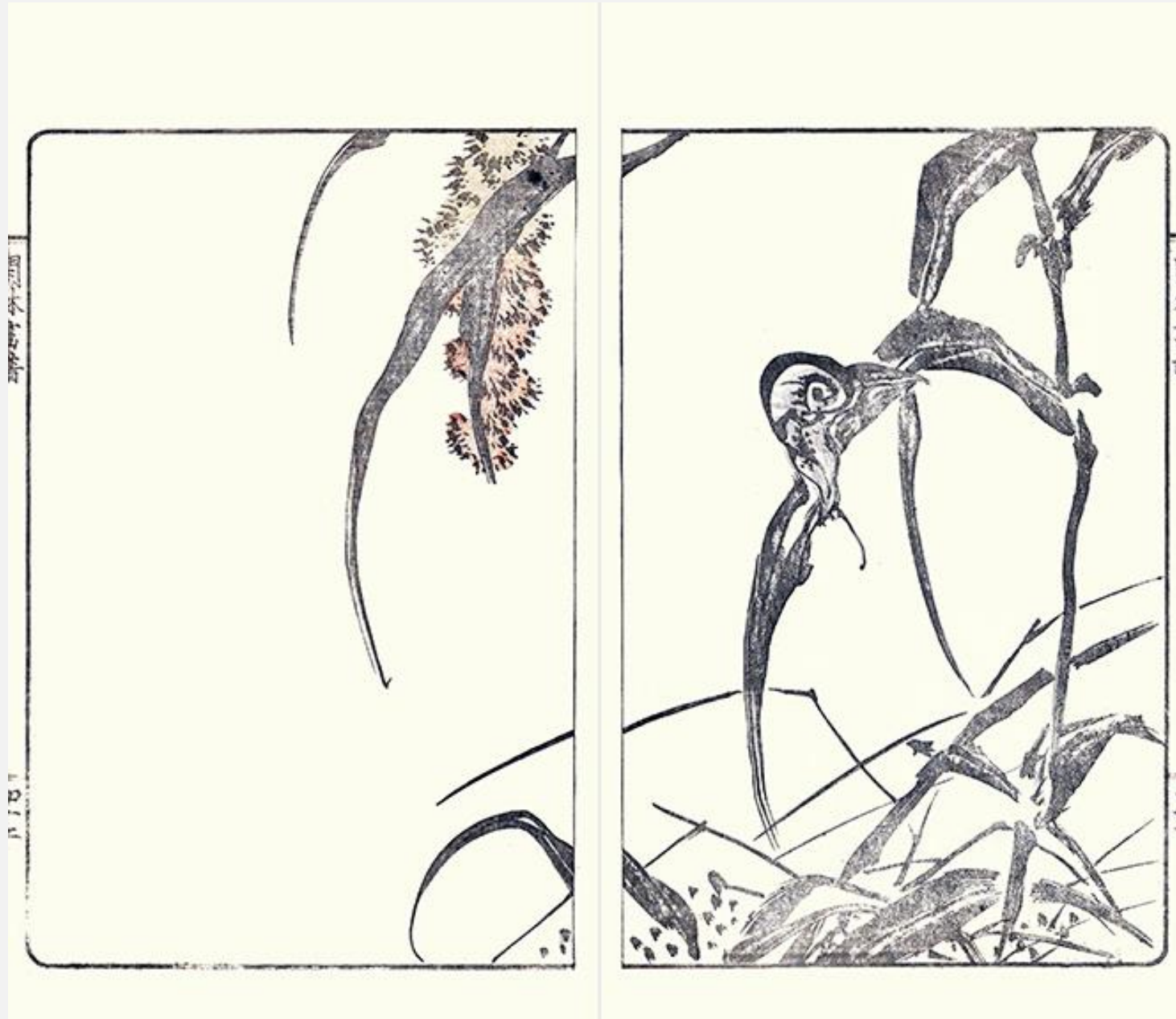
22 **Chili pepper** (*Capsicum annuum*) by Kagen Niwa, included in Fukuzensai Gafu (i.e., Picture Album by Fukuzensai) published in 1814, woodblock print, 310 x 265 mm



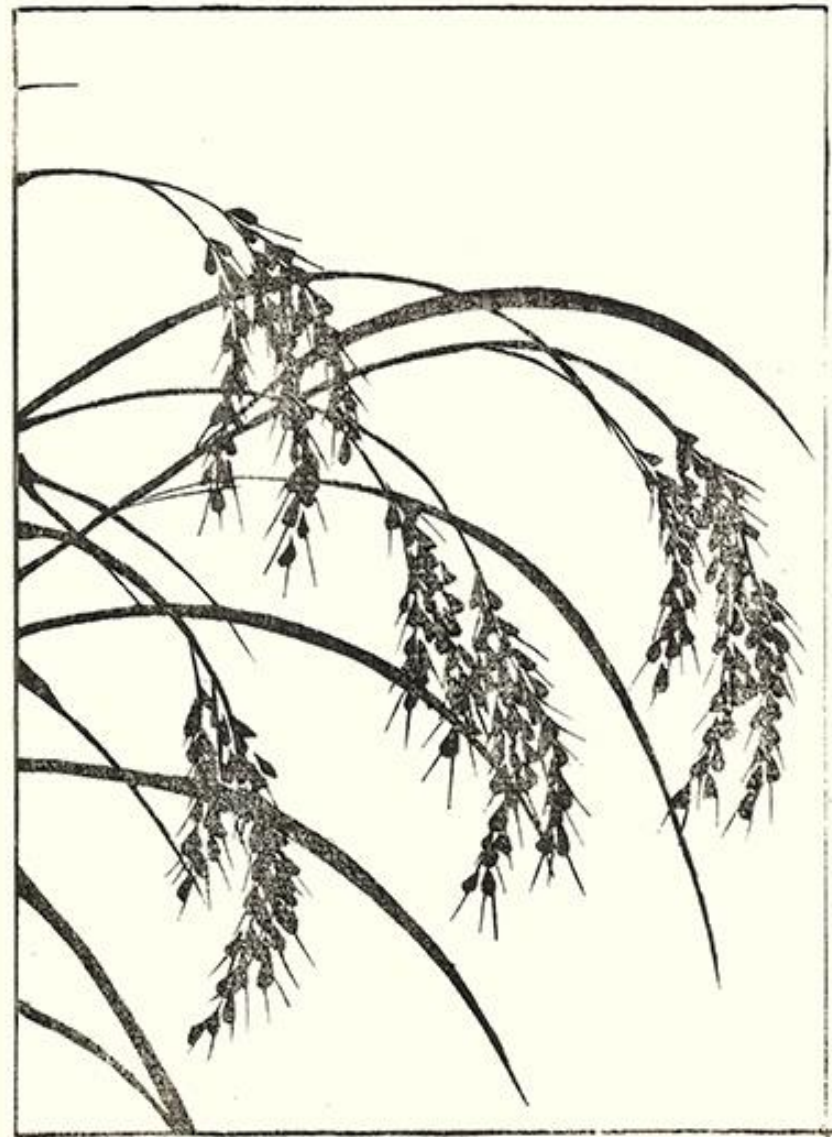
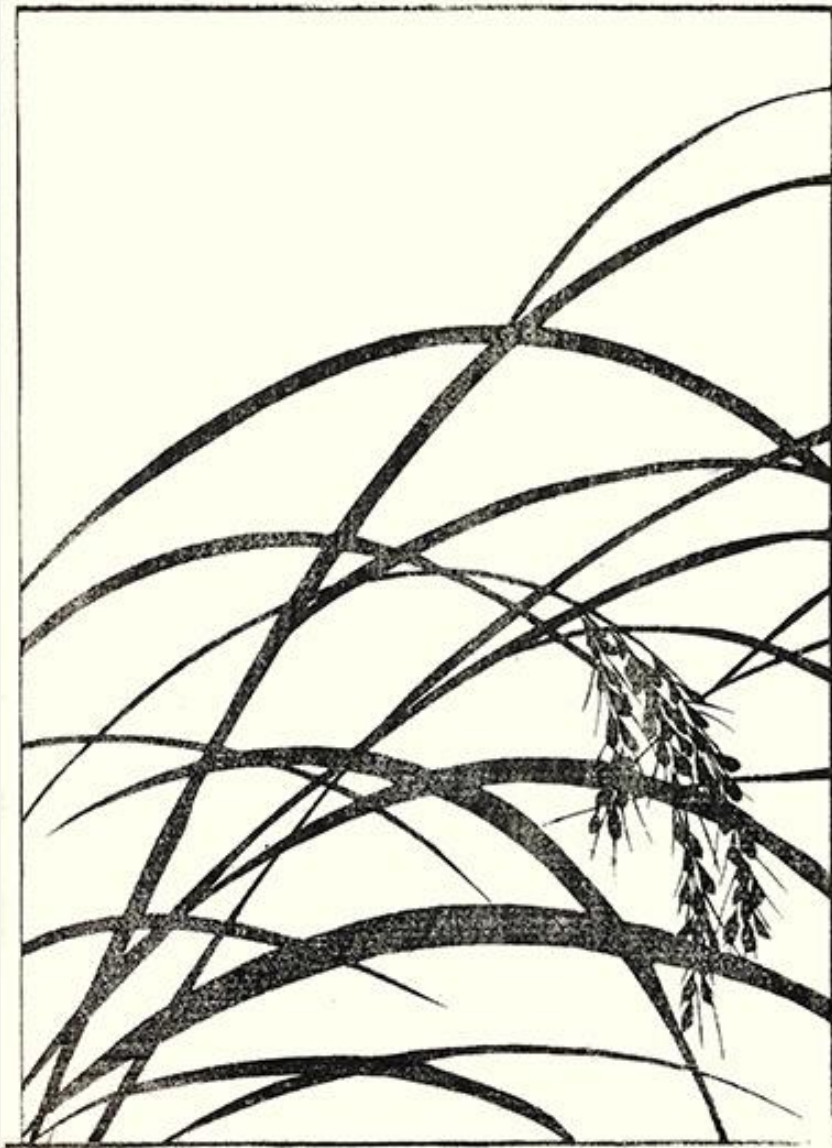
23 **Eggplant** (*Solanum melongena*) by Gyokushō Kawabata, included in *Shūga Hyakudai* (i.e., *One Hundred Lessons in Painting*) published in 1898, woodblock print, 330 x 250 mm



24 **Foxtail millet** (*Setaria italica*) by Kanrin Okada, included in Kanrin Gafu (Picture Album by Kanrin) published in 1845, woodblock print, 370 x 270 mm



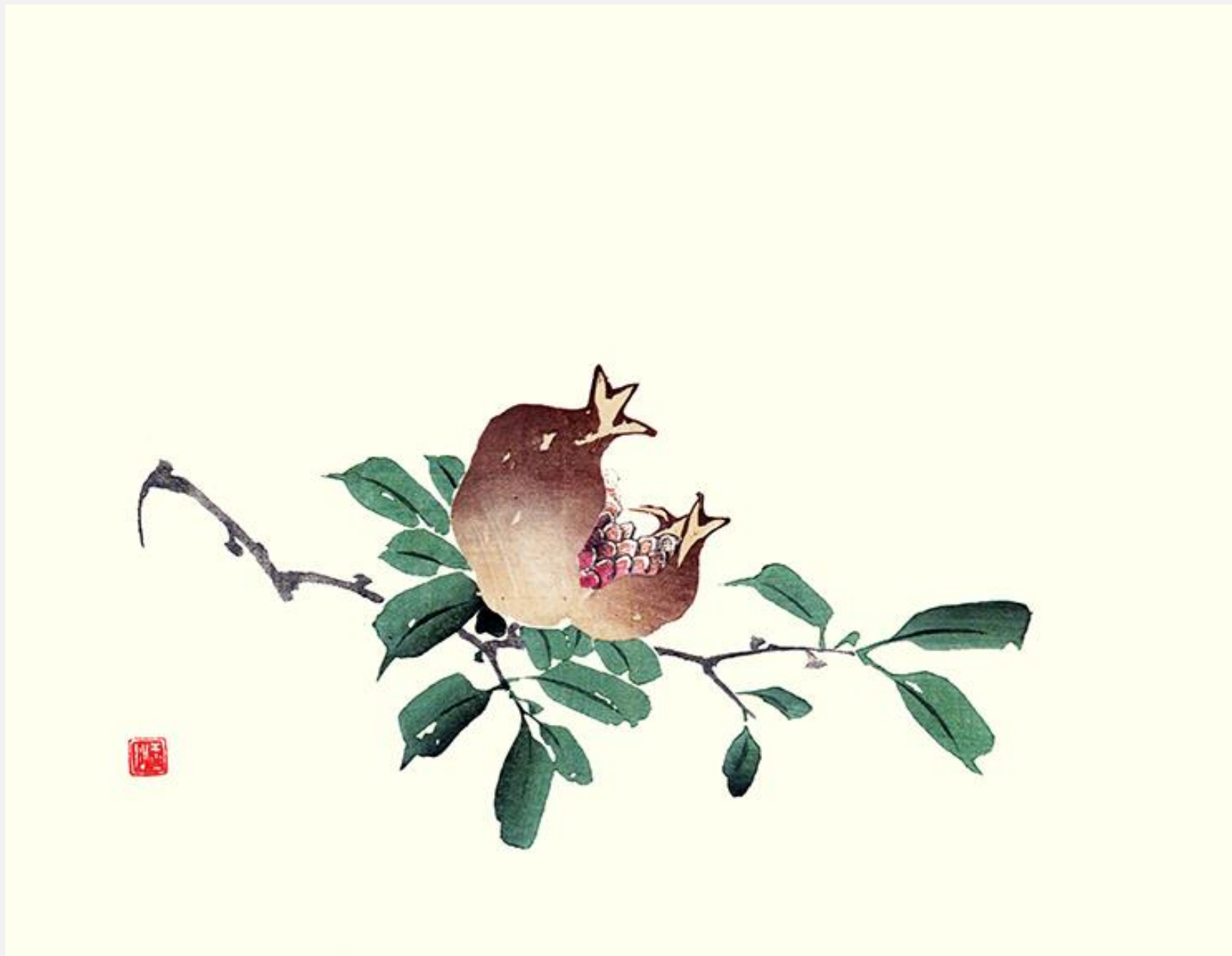
25 **Rice** (*Oryza sativa*) by Soken Yamaguchi, included in Soken Gafu Sōka No Bu (i.e., Picture Album by Soken Flower Part) published in 1806, woodblock print, 360 x 260 mm



26 **Grape** (*Vitis vinifera*) by Gyokushō Kawabata, included in *Shūga Hyakudai* (i.e., One Hundred Lessons in Painting) published in 1898, woodblock print, 330 x 250 mm



27 **Pomegranate** (*Punica granatum*) by Gyokushū Fujii, included in Gyokushū Shūgachō (i.e., Picture Lessons by Gyokushū) published in 1906, woodblock print, 310 x 240 mm



28 **Japanese persimmon** (*Diospyros kaki*) by Kanpo Araki, included in Mōhitsu Etehon (i.e., Practice Book of Brush Painting) published in 1897, woodblock print, 320 x 230 mm



第
四
号

柿

29 **Sunflower** (*Helianthus annuus*) by Kihō Kawamura, included in Kihō Gafu (Picture Album by Kihō) published in 1827, woodblock print, 340 x 250 mm



30 **Japanese chestnut** (*Castanea crenata*) by Bairei Kōno, included in Bairei Gakan (i.e., Drawing Methods of Bairei) published in 1913, woodblock print, 270 x 215 mm



[Back to Exhibitions](#)